

Quick Parts Kit Guide

The Popular Service Rebuild Kits for HOLLAND Fifth Wheels, Landing Gear, and SAF Trailer Suspensions





ORIGINAL PARTS

Preserving the premium performance of your SAF-HOLLAND fifth wheels, axle suspensions, and landing gear requires service parts manufactured with the same original OEM quality as our first fit parts and components. This catalog conveniently provides you with a comprehensive listing of the most popular service parts and kits needed to meet your fleet customer's service needs enabling them to get back on the road to making money.

Stocking the most popular service kits streamlines your inventory control, reduces required shelf space, and simplifies your operation. And most importantly, they ensure you're getting SAF-HOLLAND 100% original quality, original performance, and original reliability. This catalog will assist with quickly leading you to the appropriate kit required. Authorized distributors and dealers can order from one of our Parts Distribution Centers. Fleets can order them through traditional parts sources.

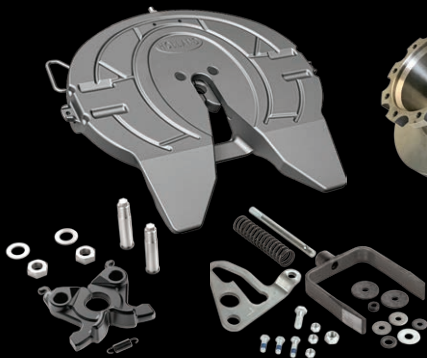
Remember... SAF-HOLLAND Original Parts are OEM quality to ensure peak performance and provide long life to keep your customers on the road.

ALWAYS SPECIFY ORIGINAL

Original Quality, Original Performance, Original Reliability

This catalog is only a portion of all the service parts and kits available from SAF-HOLLAND. Contact one of our helpful customer service representatives at 1-800-876-3929 for assistance.

ORIGINAL QUALITY



ORIGINAL PERFORMANCE



ORIGINAL RELIABILITY



CONTENTS

Fifth Wheels.....	4 – 9
Landing Gear.....	10 – 15
Trailer Suspensions.....	16 – 21
Air Disc Brakes.....	22 – 27
Service Tools.....	28 – 31

PRODUCT WEBSITES



HollandFifthWheels.com
SAFDiscBrakeParts.com
SAFP89DiscBrakes.com
SAFP89PlusDiscBrakes.com
ULX40.com
CBX40.com
CBXAeroBeam.com
NEWAYSuspensions.com

EMAIL CONTACTS



Aftermarket Sales
amsales@safholland.com

Aftermarket Service and Warranty
service@safholland.com

REQUIRE PARTS OR TECHNICAL SUPPORT?



Need assistance with service parts or technical support for SAF, HOLLAND or NEWAY products? The SAF-HOLLAND numbers below connect you with one of our knowledgeable aftermarket customer service representatives.

USA 800.876.3929

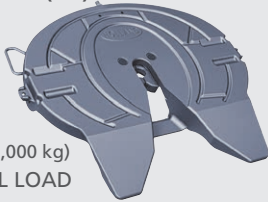
Canada 519.537.3494

Mexico 52.55.5362.8843



Holland FW35

XA-351-A-L-P (LH)
XA-351-A-P (RH)
XA-351-A-80-L-P (AIR)



CAPACITY:
55,000 LBS. (25,000 kg)
MAX VERTICAL LOAD
150,000 LBS. (68,000 kg)
MAX DRAWBAR PULL

REBUILD KIT

RK-351-A-L (LH)
RK-351-A (RH)
RK-351-A-80-L (AIR)
RK-09559
(OPTIONAL LUBE TUBE KIT)



JAW KIT

RK-351-07296



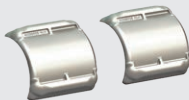
HANDLE KIT

RK-08415-1



POCKET INSERTS

RK-PKT-2



YOKE/SHAFT/CAM KIT

RK-351-12415-L (LH)
RK-351-12415-R (RH)
RK-351-12415-L80 (AIR)



MANUAL SECONDARY LOCK KIT

RK-351-12414



AUTOMATIC SECONDARY LOCK

RK-351-12414-L
RK-351-12414-R



**Holland FW33
LOW LUBE**

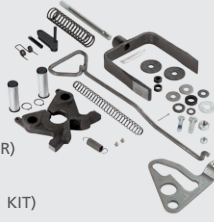
XA-331-A-L-P (LH)
XA-331-A-P (RH)
XA-331-A-80-L-P (AIR)



CAPACITY:
55,000 LBS. (25,000 kg)
MAX VERTICAL LOAD
150,000 LBS. (68,000 kg)
MAX DRAWBAR PULL

REBUILD KIT

RK-331-A-L (LH)
RK-331-A (RH)
RK-331-A-80-L (AIR)
RK-09559
(OPTIONAL LUBE TUBE KIT)



JAW KIT

RK-351-07296



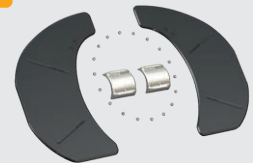
HANDLE KIT

RK-08415-1



LUBE PLATE & POCKET INSERTS

RK-331-3 (POCKET INSERTS AND LUBE PLATES)
RK-331-1 (POCKET INSERTS NOT INCLUDED)
RK-PKT-2 (POCKET INSERTS ONLY)



YOKE/SHAFT/CAM KIT

RK-351-12415-L (LH)
RK-351-12415-R (RH)
RK-351-12415-L80 (AIR)



MANUAL SECONDARY LOCK KIT

RK-311-12414



AUTOMATIC SECONDARY LOCK

RK-311-12414-L
RK-311-12414-R



**Holland FW31
NOLUBE™**

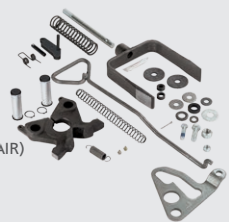
*DISCONTINUED
REPLACED BY FW33
(RECOMMENDED
ALTERNATIVE)*



CAPACITY:
55,000 LBS. (25,000 kg)
MAX VERTICAL LOAD
150,000 LBS. (68,000 kg)
MAX DRAWBAR PULL

REBUILD KIT

RK-311-A-L (LH)
RK-311-A (RH)
RK-311-A-80-L (AIR)



JAW KIT

RK-311-07296



HANDLE KIT

RK-08415-1



YOKE/SHAFT/CAM KIT

RK-311-12415-L (LH)
RK-311-12415-R (RH)
RK-311-12415-L80 (AIR)



MANUAL SECONDARY LOCK KIT

RK-311-12414



AUTOMATIC SECONDARY LOCK

RK-311-12414-L
RK-311-12414-R



NOTE: If the HOLLAND fifth wheel kit you are looking for is not mentioned in this catalog, please contact our customer service representatives for assistance – 800.876.3929.

NOTE: See page 9 for mounting bracket connection kits.

POPULAR HOLLAND FIFTH WHEEL REBUILD KITS



FWAL LOW LUBE

XA-AL-A-L-P (LH)
XA-AL-A-P (RH)
XA-AL-A-80-L-P (AIR)



FOR GEN I, II & III
IDENTIFICATION, REFER TO
XL-FW10049UM-en-US

CAPACITY:

55,000 LBS. (25,000 kg)

MAX VERTICAL LOAD

150,000 LBS. (68,000 kg)

MAX DRAWBAR PULL

REBUILD KIT

RK-AL-A-L-LL (GEN III)
RK-AL-A-L-4 (GEN IV)
RK-AL-A-80-L-4 (GEN IV AIR)



SAF-HOLLAND strongly suggests
FWAL retrofit kit RK-AL-12462
with Gen I and Gen II top plates.

JAW KIT

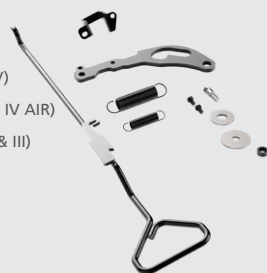
RK-AL-A-80-L-LL
(GEN II AIR)
RK-AL-11078-LL
(GEN III & IV LOW LUBE)



SAF-HOLLAND strongly suggests
FWAL retrofit kit RK-AL-12462
with Gen I and Gen II top plates.

HANDLE KIT

RK-AL-12308-4 (GEN IV)
RK-AL-12308-AR (GEN IV AIR)
RK-AL-12308 (GEN I, II, & III)



LUBE PLATE

RK-AL-1



POCKET INSERTS

RK-PKT-3 (GEN I & II)
RK-PKT-2 (GEN III & IV)



FW17

XA-171-A-L-P
XA-171-A-80-L-P
(AIR RELEASE)



FOR GEN I & GEN II
IDENTIFICATION, REFER TO
XL-FW20195PM-en-US

CAPACITY:

50,000 LBS. (22,679 kg)

MAX VERTICAL LOAD

150,000 LBS. (68,000 kg)

MAX DRAWBAR PULL

REBUILD KIT

RK-17-A-L-H
RK-17-A-80-L-H (AIR)



JAW KIT

RK-171-12305
INCLUDES GEN I & II
HARDWARE



AIR RELEASE
REQUIRES FULL
REBUILD KIT

HANDLE KIT

RK-171-12308
INCLUDES GEN I & II
HARDWARE



POCKET INSERTS

RK-PKT-2



Holland FW0070

XA-71-DA-25000P

8" MOUNT HEIGHT

XA-71-OAP 3.5"

XA-71-DAP 2"



CAPACITY:

70,000 LBS. (32,000 kg)

MAX VERTICAL LOAD

200,000 LBS. (91,000 kg)

MAX DRAWBAR PULL

Holland FW8

DISCONTINUED

(REPLACED BY FW35 –
RECOMMENDED
ALTERNATIVE)



CAPACITY:

55,000 LBS. (25,000 kg)

MAX VERTICAL LOAD

150,000 LBS. (68,000 kg)

MAX DRAWBAR PULL

Holland FWS1

DISCONTINUED

(REPLACED BY FW17 –
RECOMMENDED
ALTERNATIVE)



CAPACITY:

50,000 LBS. (22,679 kg)

MAX VERTICAL LOAD

150,000 LBS. (68,000 kg)

MAX DRAWBAR PULL

REBUILD KIT

9" MOUNT HEIGHT

RK-65014

2" KINGPIN

RK-65015

3.5" KINGPIN



8" MOUNT HEIGHT

RK-65014-1

2" KINGPIN

RK-65015-1

3.5" KINGPIN



JAW KIT

RK-65024

FOR 2"
KINGPIN JAW

RK-65024-1

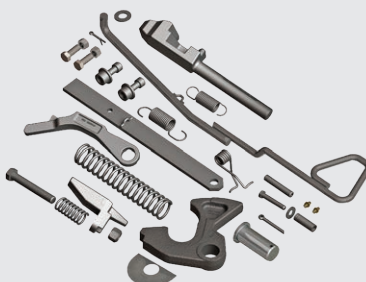
FOR 3.5"
KINGPIN JAW



REBUILD KIT

RK-201-A3-L (LH)

RK-201-A3 (RH)



FOR FIFTH WHEELS
MANUFACTURED PRIOR TO 1999,
ADD WEDGE KIT RK-09590-W

HANDLE KIT

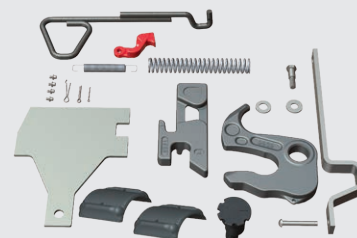
RK-09557 (LH)

RK-09556 (RH)



REBUILD KIT

RK-FWS-A-L



JAW KIT

RK-4109939



HANDLE KIT

RK-10990



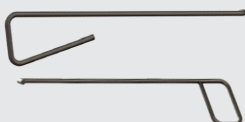
HANDLE KIT

XA-1117-H

9" MOUNT

XA-03715

8" MOUNT



POCKET INSERTS

RK-PKT-2



NOTE: If the HOLLAND fifth wheel kit you are looking for is not mentioned in this catalog, please contact our customer service representatives for assistance – **800.876.3929**.

NOTE: See page 9 for mounting bracket connection kits.



FW35TT TERMINAL TRACTOR

XA-351-TT-1-P
NO FITTINGS ON AIR CYLINDER

XA-351-TT-2-P
TWO FITTINGS ON AIR CYLINDER

CAPACITY:
50,000 LBS. (22,679 kg)
MAX VERTICAL LOAD
150,000 LBS. (68,000 kg)
MAX DRAWBAR PULL



REBUILD KIT

RK-351-TT



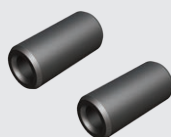
JAW KIT

RK-12197



BUSHINGS

XB-0011



BRACKET CONNECTION KIT

RK-12058



AIR CYLINDERS

XA-12055
FOR XA-351-TT-1-P –
NO FITTINGS ON AIR CYLINDER

XA-12057
FOR XA-351-TT-2-P –
TWO FITTINGS ON AIR CYLINDER



POCKET INSERT KIT

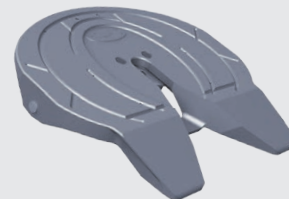
RK-PKT-5



FW03344 TERMINAL TRACTOR

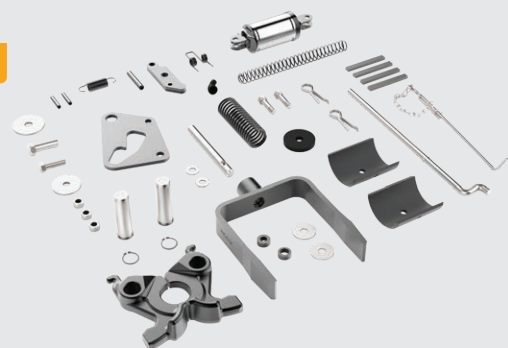
DISCONTINUED
(REPLACED BY FW35TT –
RECOMMENDED
ALTERNATIVE)

CAPACITY:
50,000 LBS. (22,679 kg)
MAX VERTICAL LOAD
150,000 LBS. (68,000 kg)
MAX DRAWBAR PULL



REBUILD KIT

RK-351-03505
AIR CYLINDER -
1 PORT, 45° ELBOW
RK-351-03505-3
AIR CYLINDER -
2 PORT, NO ELBOW
RK-351-03505-4
AIR CYLINDER -
2 PORT, 45° ELBOW



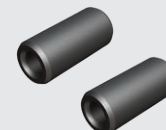
JAW KIT

RK-351-08332-1



BUSHINGS

XB-0011



BRACKET CONNECTION KIT

RK-12058



AIR CYLINDERS

XA-2524-R-13-1
1 PORT
XA-2524-R-13-4
2 PORTS



POCKET INSERT KIT

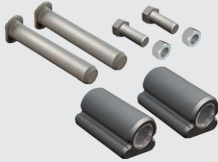
XA-03423
SOLD INDIVIDUALLY –
TWO REQUIRED



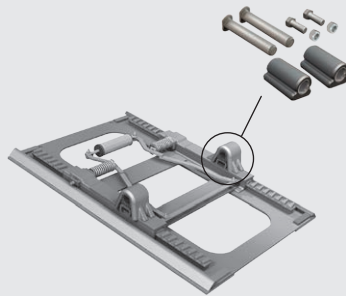


MOUNTING BRACKET CONNECTION KITS

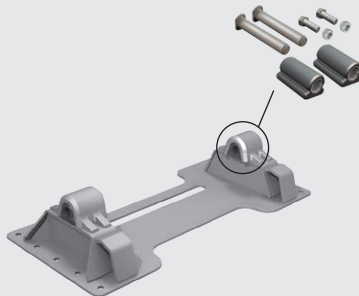
RK-06973-1
BRACKET
CONNECTION KIT



**FOR TRADITIONAL
SLIDER & STATIONARY**



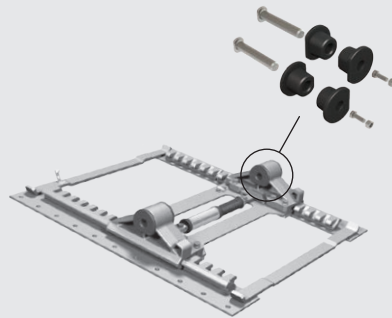
**FOR STATIONARY
INTEGRATED PLATE MOUNT**



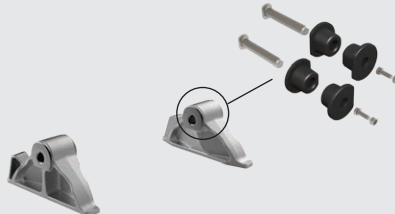
RK-10605
BRACKET
CONNECTION KIT



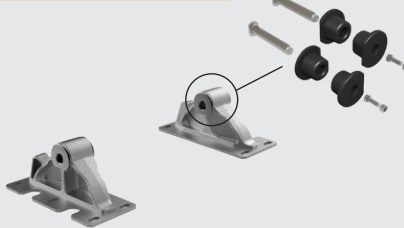
FOR ILS SLIDER & STATIONARY



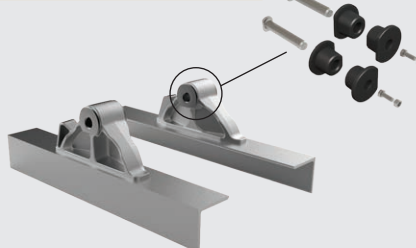
FOR ANGLE MOUNT



FOR FOOT MOUNT



WITH ANGLE MOUNT



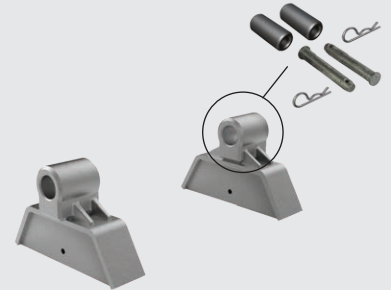
RK-171-12310
BRACKET
CONNECTION KIT
FOR FW17 GEN II
ONLY



RK-12058
BRACKET
CONNECTION KIT



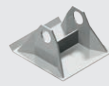
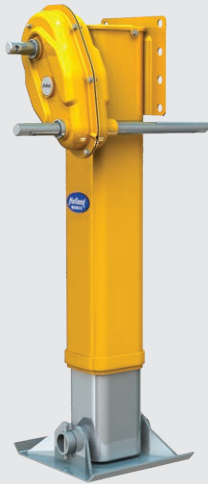
**FOR TERMINAL TRACTOR
FABRICATED FOOT MOUNT**





POPULAR HOLLAND LANDING GEAR KITS

MARK V™



LEG WITH 4.5" SAND SHOE

Left-Hand Leg

XA-S9-3A105	16.5" Travel
XA-S9-5A105	18.7" Travel

Right-Hand Leg (Gear Box)

XA-S8-3A105	16.5" Travel
XA-S8-5A105	18.7" Travel



LEG WITH 2" LOW-PROFILE SAND SHOE

Left-Hand Leg

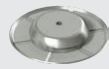
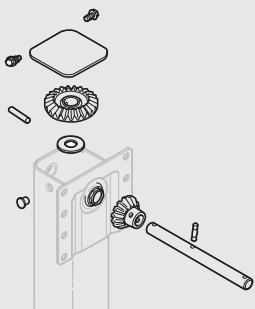
XA-S9-3A113	16.5" Travel
-------------	--------------

Right-Hand Leg (Gear Box)

XA-S8-3A113	16.5" Travel
-------------	--------------

BEVEL AND PINION GEAR

RK-11286 – 1 SPEED LEG
RK-11362 – 2 SPEED LEG



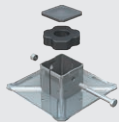
LEG WITH SELF-LEVELING FOOT

Left-Hand Leg

XA-S9-3A001	16.5" Travel
XA-S9-5A001	18.7" Travel

Right-Hand Leg (Gear Box)

XA-S8-3A001	16.5" Travel
XA-S8-5A001	18.7" Travel



LEG WITH REMOVABLE CUSHION FOOT

Left-Hand Leg

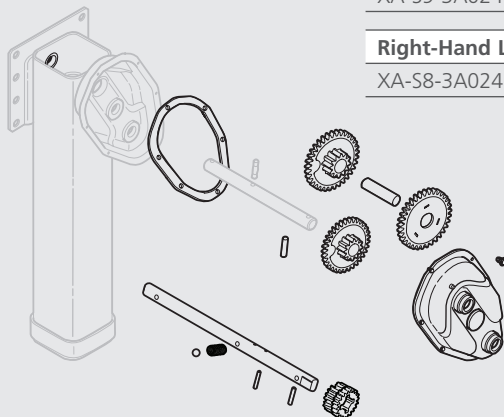
XA-S9-3A024	16.5" Travel
-------------	--------------

Right-Hand Leg (Gear Box)

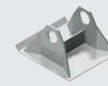
XA-S8-3A024	16.5" Travel
-------------	--------------

GEARBOX REPAIR KIT

RK-11287



CLASSIC™



LEG WITH 4.5" SAND SHOE

Left-Hand Leg

LG2T01-710000000	17" Travel
------------------	------------

Right-Hand Leg (Gear Box)

LG2T01-720000000	17" Travel
------------------	------------



LEG WITH 2" LOW-PROFILE SAND SHOE

Left-Hand Leg

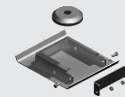
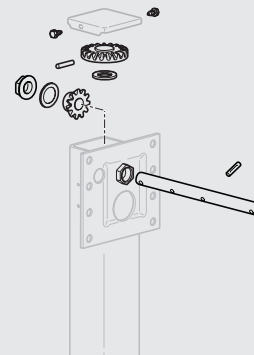
LG2T03-710000000	17" Travel
------------------	------------

Right-Hand Leg (Gear Box)

LG2T03-720000000	17" Travel
------------------	------------

BEVEL AND PINION GEAR

RK-11488



LEG WITH LOW-PROFILE REMOVABLE CUSHION FOOT

Left-Hand Leg

LG2T0Z-710000000	17" Travel
------------------	------------

Right-Hand Leg (Gear Box)

LG2T0Z-720000000	17" Travel
------------------	------------



LEG WITH HEAVY-DUTY LOW PROFILE FOOT

Left-Hand Leg

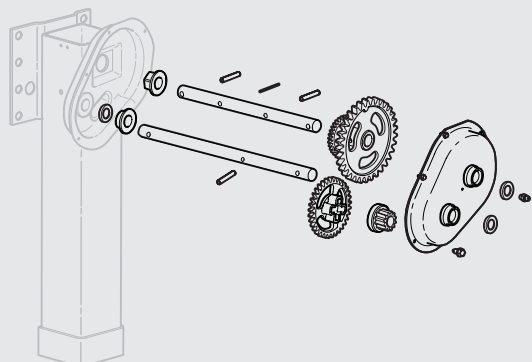
LG2T09-7100E9000	17" Travel
------------------	------------

Right-Hand Leg (Gear Box)

LG2T09-7200E9000	17" Travel
------------------	------------

GEARBOX REPAIR KIT

RK-11489



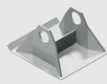
NOTE: If the HOLLAND landing gear kit you are looking for is not mentioned in this catalog, please contact our customer service representatives for assistance – 800.876.3929.

NOTE: MARK V sets come with standard accessories kit.

POPULAR HOLLAND LANDING GEAR KITS



Holland ATLAS™ 55



**LEG WITH
4.5" SAND SHOE**

Left-Hand Leg

LG4001-710000000	17" Travel
LG4001-910000000	19" Travel

Right-Hand Leg (Gear Box)

LG4001-720000000	17" Travel
LG4001-920000000	19" Travel



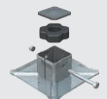
**LEG WITH
2" LOW-PROFILE
SAND SHOE**

Left-Hand Leg

LG4003-710000000	17" Travel
LG4003-910000000	19" Travel

Right-Hand Leg (Gear Box)

LG4003-720000000	17" Travel
LG4003-920000000	19" Travel



**LEG WITH
REMOVABLE
CUSHION FOOT**

Left-Hand Leg

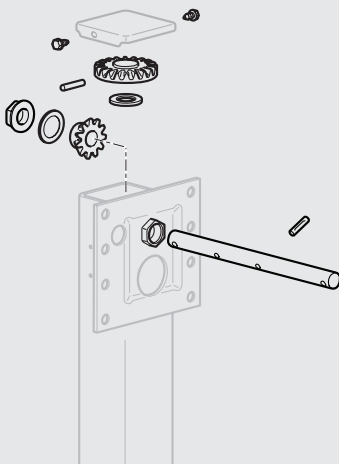
LG400B-710000000	17" Travel
LG400B-910000000	19" Travel

Right-Hand Leg (Gear Box)

LG400B-720000000	17" Travel
LG400B-920000000	19" Travel

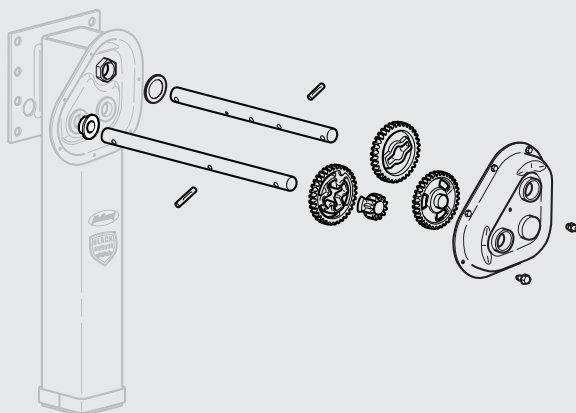
BEVEL AND PINION GEAR

RK-11442

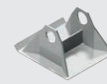


GEARBOX REPAIR KIT

RK-11443



Holland ATLAS™ 65



**LEG WITH
4.5" SAND SHOE**

Left-Hand Leg

1025300006460	17" Travel
1025300006520	19" Travel

Right-Hand Leg (Gear Box)

1025300006450	17" Travel
1025300006530	19" Travel



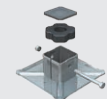
**LEG WITH
2" LOW-PROFILE
SAND SHOE**

Left-Hand Leg

1025300006620	17" Travel
1025300006410	19" Travel

Right-Hand Leg (Gear Box)

1025300006610	17" Travel
1025300006420	19" Travel



**LEG WITH
REMOVABLE
CUSHION FOOT**

Left-Hand Leg

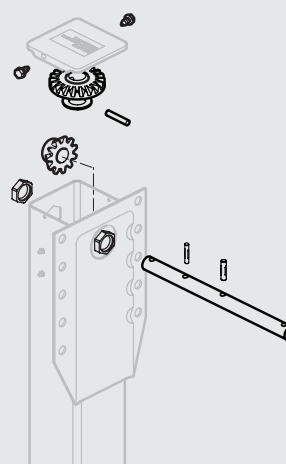
1025300007030	17" Travel
1025300008670	19" Travel

Right-Hand Leg (Gear Box)

1025300007040	17" Travel
1025300008680	19" Travel

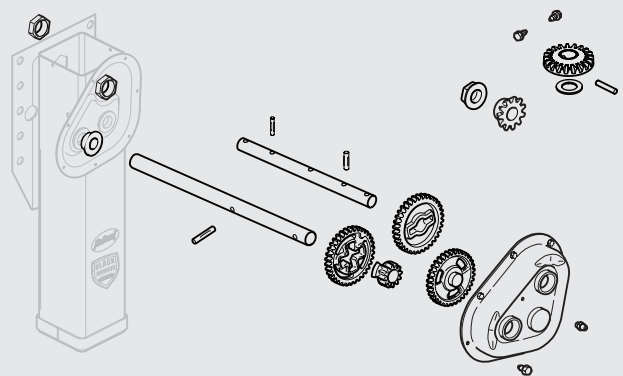
BEVEL AND PINION GEAR

RK-11682



GEARBOX REPAIR KIT

RK-11683



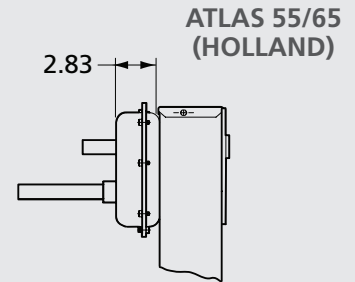
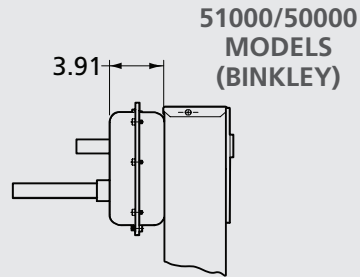


REBUILD KITS

ORIGINAL PARTS REBUILD KITS FOR DISCONTINUED BINKLEY MODELS

QUICK TIP

NOT SURE WHICH MODEL YOU HAVE?
- MEASURE GEARBOX DEPTH



51000 SERIES



DISCONTINUED
(Binkley Model
Replaced by Atlas 55)



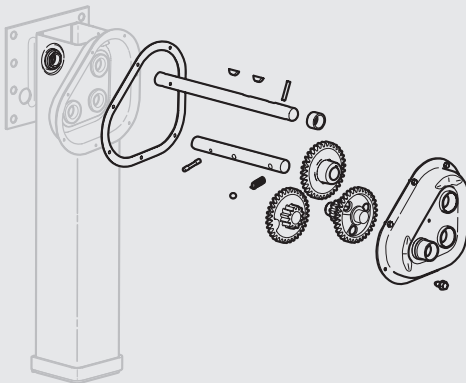
50000 SERIES



DISCONTINUED
(Binkley Model
Replaced by Atlas 65)

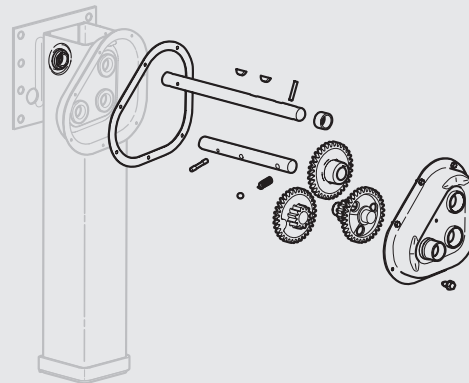
GEAR BOX REPAIR KIT

RK-11289




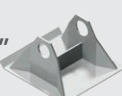


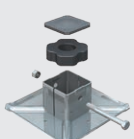
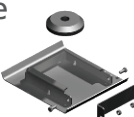



GEAR BOX REPAIR KIT

RK-11285



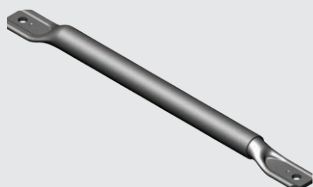


LANDING GEAR FOOTWEAR AND ACCESSORIES

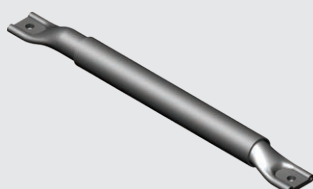
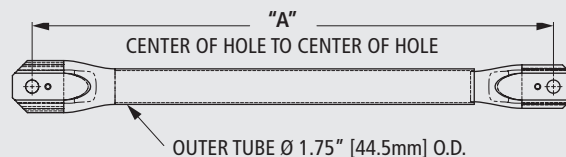
		CLASSIC	ATLAS 55	ATLAS 65	MARK V	MARK V HD
SAND SHOES	Low Profile 10" x 10" x 2" 	50616008				
	High Profile 10" x 10" x 4.5" 	50616001				
AXLE KITS	Hollow 	50616023				
	Solid 	50616024				
REMOVABLE CUSHION FOOT	Standard RCF 	N/A	LG0048-01	LG0048-10	RK-V-024	
	Low Profile RCF 	716059			N/A	
ACCESSORIES	68" Cross Shaft 	LG0094				
	Crank Handle 	50644000			50644015	
	Brace Ear and Crank Handle Carrier Hardware Kit 	LG2789			LG2790	



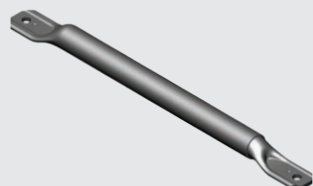
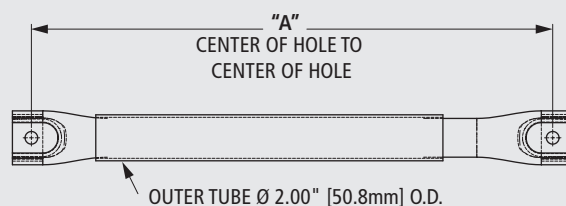
LANDING GEAR ADJUSTABLE STRUT BRACES



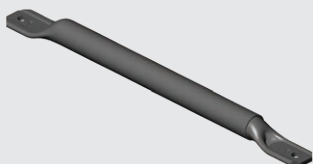
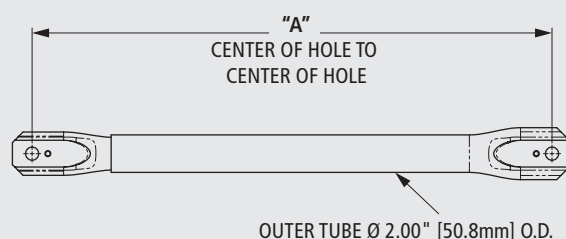
PART NO.	"A" [mm]	WEIGHT LBS. [kg]
50618006	26.00" [660.4] TO 41.00" [1041.4]	5.30 [2.40]
50618007	42.00" [1066.8] TO 57.00" [1447.8]	7.00 [3.18]
50618008	56.00" [1422.4] TO 72.00" [1828.8]	9.10 [4.13]



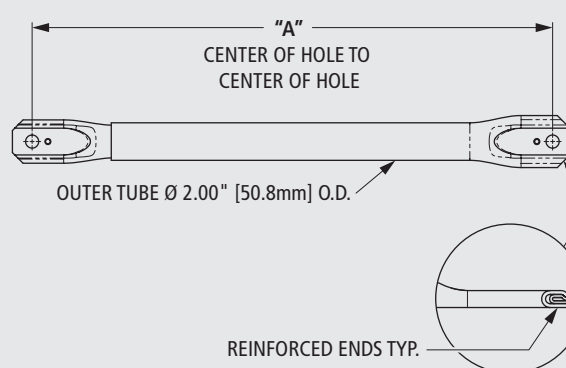
NO.	"A" [mm]	WEIGHT LBS. [kg]
50618009	26.00" [660.4] TO 41.00" [1041.4]	13.60 [6.17]
50618010	35.00" [889.0] TO 54.00" [1371.6]	18.10 [8.21]
50618011	56.00" [1422.4] TO 72.00" [1828.8]	25.20 [11.43]



PART NO.	"A" [mm]	WEIGHT LBS. [kg]
50618012	26.00" [660.4] TO 41.00" [1041.4]	6.50 [2.95]
50618013	42.00" [1066.8] TO 57.00" [1447.8]	8.80 [3.99]
50618014	56.00" [1422.4] TO 72.00" [1828.8]	11.10 [5.03]



PART NO.	DESCRIPTION	"A" [mm]	WEIGHT LBS. [kg]
50618031	Brace, Med Duty ADJ 56-72"	56[1422.4] TO 72[1828.8]	14.60 [6.62]
50618030	Brace, Med Duty ADJ 42-57"	42[1066.8] TO 57[1447.8]	10.80 [4.90]
50618029	Brace, Med Duty ADJ 26-41"	26[660.4] TO 41[1041.4]	8.00 [3.63]





Popular Suspension Kits – Air, Mechanical and Disc Brakes



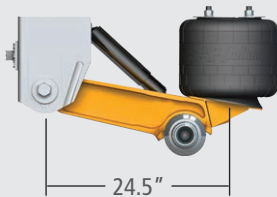
SAF *Holland*
ORIGINAL PARTS™

SAF CBX FIXED FRAME SERIES KITS

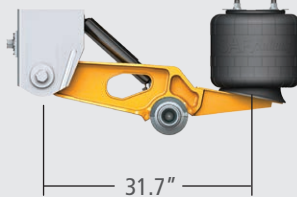
TRAILING ARM IDENTIFICATION

NOT SURE WHICH MODEL YOU HAVE?
COMPARE TO THE TRAILING ARM DESIGNS SHOWN BELOW.

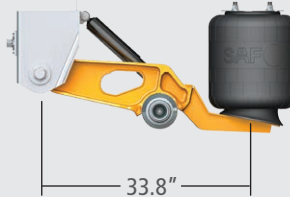
245 (CBX23, CBX25 & CBX25/30)



317 (CBX23)



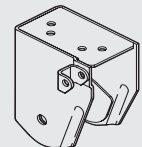
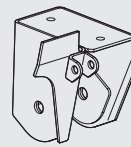
338 (CBX25 & CBX25/30)



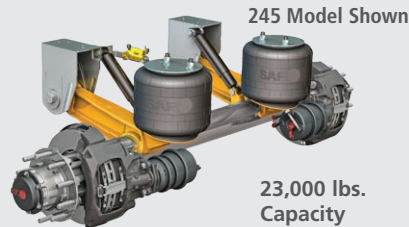
FRAME BRACKET IDENTIFICATION

WINGED

NON-WINGED



CBX23



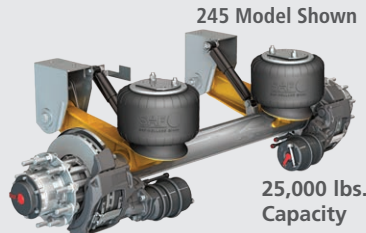
CBX23 245 – NON-WINGED		
RIDE HEIGHT	SHOCK ABSORBER	AIR SPRING
14"	90045381	90557397
15"	90045608	90557398
16"	90045299	90557399
17"	90045299	90557399

CBX23 317 – NON-WINGED		
RIDE HEIGHT	SHOCK ABSORBER	AIR SPRING
14"	90045607	90557403
15"	90045608	90557403
16"	90045299	90557404
17"	90045299	90557404

CBX23 245 – WINGED		
RIDE HEIGHT	SHOCK ABSORBER	AIR SPRING
14"	90044868	90557397
15"	90045381	90557398
16"	90044162	90557399
17"	90044162	90557399

CBX23 317 – WINGED		
RIDE HEIGHT	SHOCK ABSORBER	AIR SPRING
14"	90045381	90557373
15"	90045607	90557373
16"	90044162	90557404
17"	90044162	90557404

CBX25



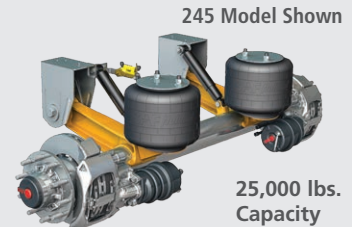
CBX25 245 – NON-WINGED		
RIDE HEIGHT	SHOCK ABSORBER	AIR SPRING
14"	90045381	90557400
15"	90045608	90557401
16"	90045299	90557402
17"	90045299	90557402

CBX25 338 – NON-WINGED		
RIDE HEIGHT	SHOCK ABSORBER	AIR SPRING
14"	90045608	90557376
15"	90044162	90557376
16"	90045054	90557377
17"	90045054	90557377

CBX25 245 – WINGED		
RIDE HEIGHT	SHOCK ABSORBER	AIR SPRING
14"	90044868	90557400
15"	90045381	90557401
16"	90044162	90557402
17"	90044162	90557402

CBX25 338 – WINGED		
RIDE HEIGHT	SHOCK ABSORBER	AIR SPRING
14"	90045607	90557376
15"	90045608	90557376
16"	90045040	90557377
17"	90045040	90557377

CBX25/30



CBX25/30 245 – NON-WINGED		
RIDE HEIGHT	SHOCK ABSORBER	AIR SPRING
14"	90045607	90557410
15"	90045608	90557410
16"	90045299	90557409
17"	90045299	90557409

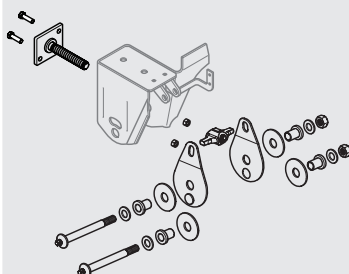
CBX25/30 338 – NON-WINGED		
RIDE HEIGHT	SHOCK ABSORBER	AIR SPRING
14"	90044868	90557410
15"	90045607	90557410
16"	90044162	90557409
17"	90044162	90557409

CBX25/30 245 – WINGED		
RIDE HEIGHT	SHOCK ABSORBER	AIR SPRING
14"	90044868	90557410
15"	90045607	90557410
16"	90044162	90557409
17"	90044162	90557409

CBX25/30 338 – WINGED		
RIDE HEIGHT	SHOCK ABSORBER	AIR SPRING
15"	90045607	90557243
17"	90044162	90557243

CBX SWING ALIGN KIT

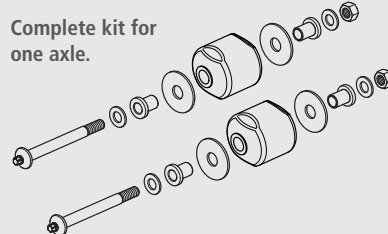
48100406



CBX PIVOT BUSHING KIT

48100695

Complete kit for one axle.



MAX VALVE HEIGHT CONTROL VALVE (HCV) KITS

- 50860013** Non-Dump
- 50860014** Pressure Dump
- 50860015** Pressure Dump – Normal Flow
- 50860016** Pressure Dump – Low Flow



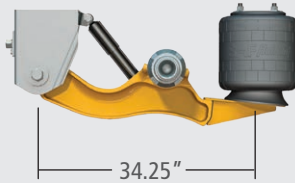
NOTE: If the SAF trailer suspension kit you are looking for is not mentioned in this catalog, please contact our customer service representatives for assistance – **800.876.3929**.

SAF ● CBX UNDERSLUNG FIXED FRAME SERIES KITS

TRAILING ARM IDENTIFICATION

NOT SURE WHICH MODEL YOU HAVE?
COMPARE TO THE TRAILING ARM DESIGN BELOW.

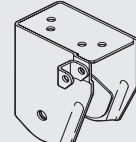
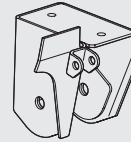
342 (CBX23u, CBX25u)



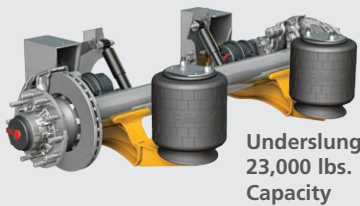
FRAME BRACKET IDENTIFICATION

WINGED

NON-WINGED

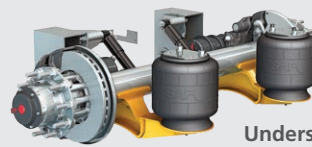


CBX23u



Underslung
23,000 lbs.
Capacity

CBX25u



Underslung
25,000 lbs.
Capacity

CBX23u 342 – 3" UP TRAVEL – NON-WINGED

RIDE HEIGHT	SHOCK ABSORBER	AIR SPRING
6"	90044868	90557403
9"	90044868	90557404
8"	90045608	90557377
9"	90044162	90557377
10"	90045040	90557377
12"	90045666	90557377

CBX23u 342 – 4" UP TRAVEL – NON-WINGED

7"	90044868	90557403
8"	90045381	90557404
9"	90045608	90557377
10"	90044162	90557377
12"	90045040	90557377
13"	90045054	90557377
14"	90045054	90557119

CBX23u 342 – 3" UP TRAVEL – WINGED

6"	90045381	90045381
----	----------	----------

CBX23u 342 – 4" UP TRAVEL – WINGED

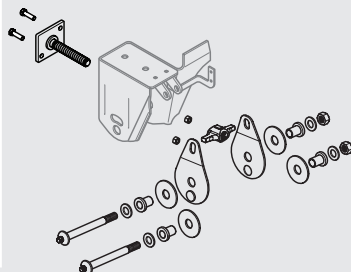
7"	90045381	90557403
8"	90045608	90557404

CBX25u 342 – 4" UP TRAVEL – NON-WINGED

RIDE HEIGHT	SHOCK ABSORBER	AIR SPRING
8"	90045381	90557404
10"	90044162	90557377
12"	90045040	90557377

CBX SWING ALIGN KIT

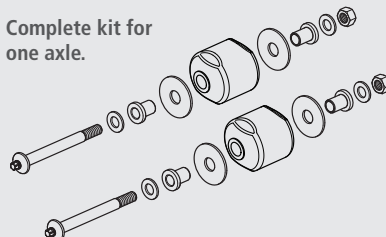
48100406



CBX PIVOT BUSHING KIT

48100695

Complete kit for
one axle.



MAX VALVE HEIGHT CONTROL VALVE (HCV) KITS

- 50860013** Non-Dump
- 50860014** Pressure Dump
- 50860015** Pressure Dump – Normal Flow
- 50860016** Pressure Dump – Low Flow



SAF CBXA AEROBEAM™ FIXED FRAME SERIES KITS

CBXAN23

Narrow Hanger



23,000 lbs.
Capacity

RIDE HEIGHT	SHOCK ABSORBER	AIR SPRING
14"	90044868	90557397
15"	90045381	90557397
16"	90044162	90557398
17"	90045299	90557399

CBXAS23

Standard Hanger



23,000 lbs.
Capacity

RIDE HEIGHT	SHOCK ABSORBER	AIR SPRING
14"	90044868	90557397
15"	90045607	90557397
16"	90044669	90557398
17"	90045669	90557399

CBXAS25

Standard Hanger



25,000 lbs.
Capacity

RIDE HEIGHT	SHOCK ABSORBER	AIR SPRING
14"	90044868	90557400
15"	90045607	90557401
16"	90044669	90557402
17"	90045669	90557399

CBXAS30

Standard Hanger



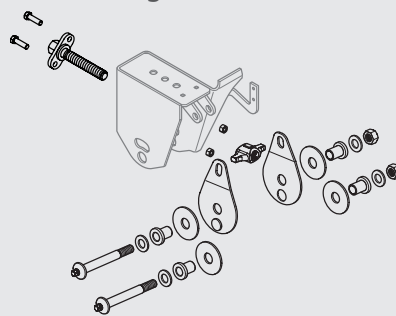
30,000 lbs.
Capacity

RIDE HEIGHT	SHOCK ABSORBER	AIR SPRING
14"	90044868	90557480
15"	90045607	90557480
16"	90044299	90557479
17"	90045299	90557479

CBXAN SWING ALIGN KIT

48100699

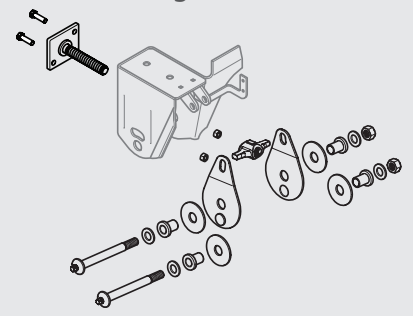
Narrow Hanger



CBXAS SWING ALIGN KIT

48100696

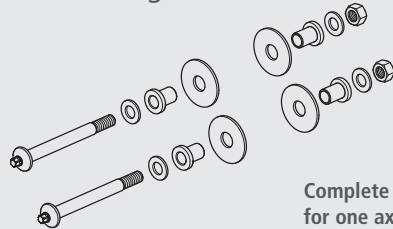
Standard Hanger



CBXAN PIVOT CONNECTION KIT

48100700

Narrow Hanger

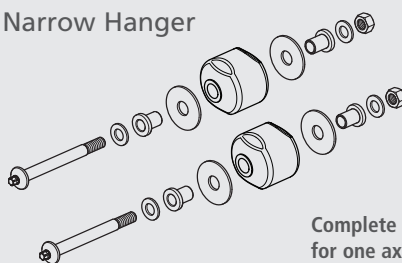


Complete kit
for one axle.

CBXAN PIVOT BUSHING KIT

48100698

Narrow Hanger

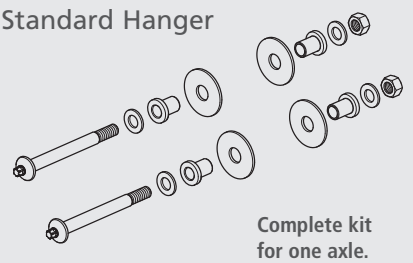


Complete kit
for one axle.

CBXAS PIVOT CONNECTION KIT

48100697

Standard Hanger

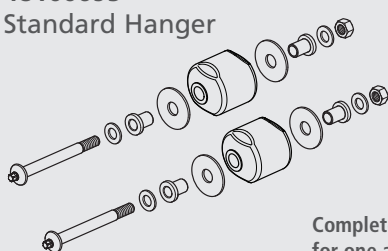


Complete kit
for one axle.

CBXAS PIVOT BUSHING KIT

48100695

Standard Hanger



Complete kit
for one axle.

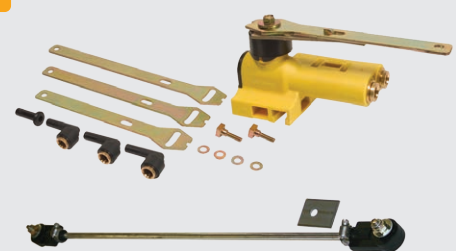
MAX VALVE HEIGHT CONTROL VALVE (HCV) KITS

50860013 Non-Dump

50860014 Pressure Dump

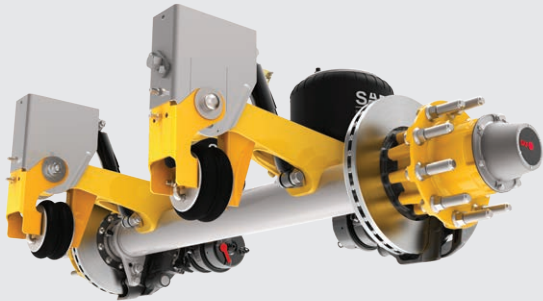
50860015 Pressure Dump
– Normal Flow

50860016 Pressure Dump
– Low Flow



SAF POSILIFT™ AXLE UNIT KITS

CBXA AEROBEAM™ POSILIFT



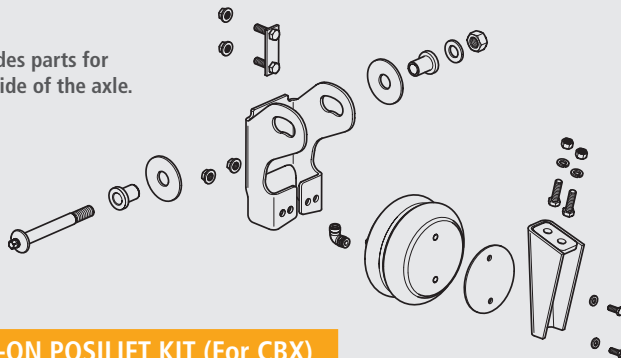
FOR USE ON CBXAN23, CBXAS23, CBXAS25, CBXAS30 AND CBXA40 AEROBEAM™ MODELS

BOLT-ON POSILIFT KIT (For CBXA AEROBEAM)

48100732 - CBXAN (Narrow Width)

48100759 - CBXAS (Standard Width)

Includes parts for one side of the axle.

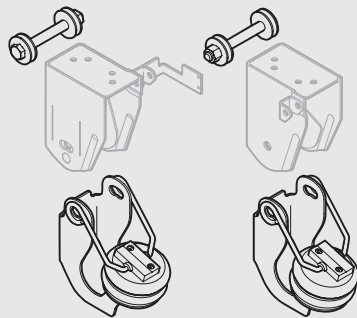


BOLT-ON POSILIFT KIT (For CBX)

44100160

Complete kit for one axle. Includes air springs.

* Not available for disc brakes on CBX25 338 and CBX25/30 245 suspensions.



LIFT AXLE CONTROL VALVES (For CBX and CBXA)

50860011

Electric Air Control Valve

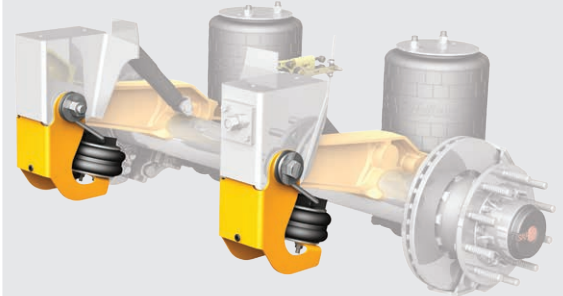


50860009

Manual Air Control Valve



CBX POSILIFT

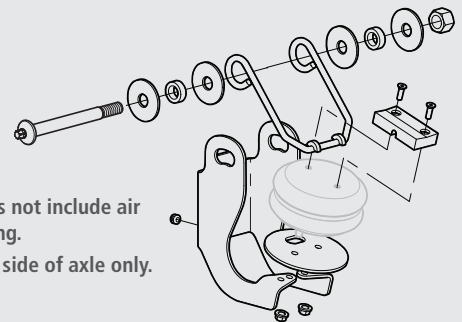


FOR USE ON CBX23 AND CBX25 MODELS

POSILIFT BRACKET REPLACEMENT KIT (For CBX)

48100496

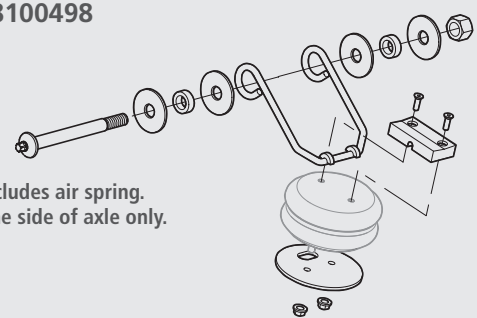
Does not include air spring. One side of axle only.



BOLT-ON POSILIFT KIT (For CBX)

48100498

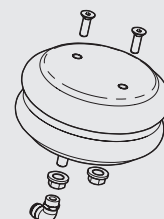
Includes air spring. One side of axle only.



BOLT-ON POSILIFT KIT (For CBX)

48100497

Includes one air spring and fasteners.




SAF ● CBX AIR SLIDER SERIES KITS

CBX40

DISCONTINUED

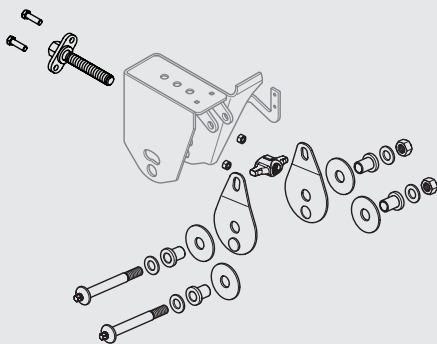
REPLACED BY CBXA40 AEROBEAM



RIDE HEIGHT	SHOCK ABSORBER	AIR SPRING
16"	90045298	90557372 
16.5"	90044162	
17"	90044162	

SWING ALIGN KIT

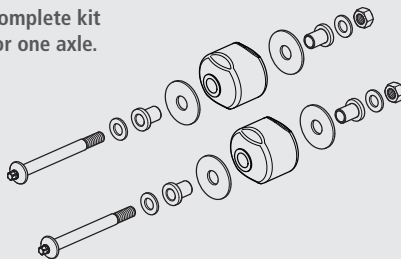
48100406



PIVOT CONNECTION KIT

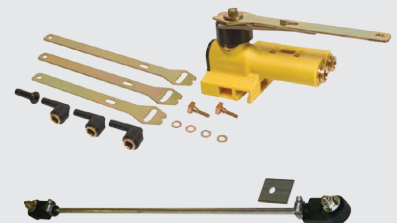
48100695

Complete kit
for one axle.



MAX VALVE HEIGHT CONTROL VALVE (HCV) KITS

- 50860013 Non-Dump
- 50860014 Pressure Dump
- 50860015 Pressure Dump
– Normal Flow
- 50860016 Pressure Dump
– Low Flow



CBX46



CBX50



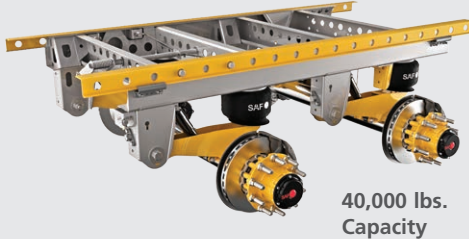
CBX69



NOTE: Contact Customer Service for CBX46, 50, & 69 kit part number assistance – 800.876.3929.

SAF ● CBXA AEROBEAM™ AIR SLIDER SERIES KITS

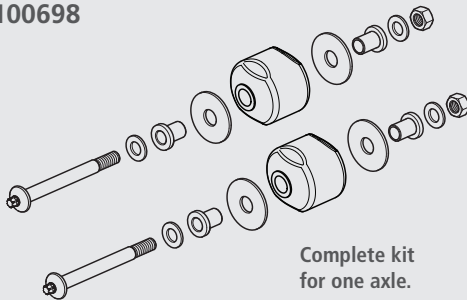
CBXA40



RIDE HEIGHT	SHOCK ABSORBER	AIR SPRING
16"	90045298	90557372
16.5"	90044162	90557372
17"	90044162	90557372
18"	90045040	90557194

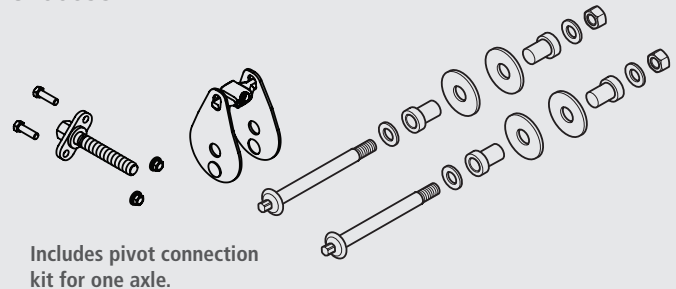
PIVOT BUSHING KIT

48100698



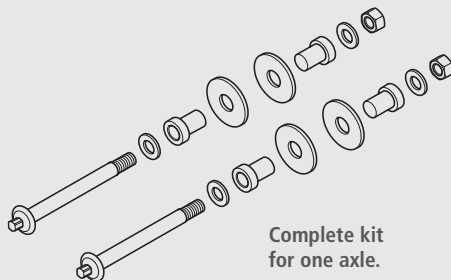
SWING ALIGN KIT

48100699



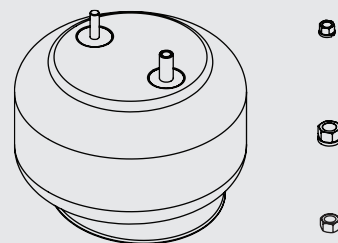
PIVOT CONNECTION KIT

48100700



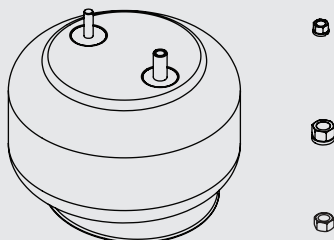
AIR SPRING KIT (16", 16.5", & 17" Ride Height)

48100650



AIR SPRING KIT (18" Ride Height)

48100651



MAX VALVE HEIGHT CONTROL VALVE (HCV) KITS

- 50860013 Non-Dump
- 50860014 Pressure Dump
- 50860015 Pressure Dump
– Normal Flow
- 50860016 Pressure Dump
– Low Flow



**SAF ● ULX40,
ULTRALITE™ &
DURASYSTEM™**
(Binkley)



**SAF ● DLX40 &
DURALITE™**
(Binkley)



**SAF ● ZFX40 &
Z-FRAME**
(Binkley)

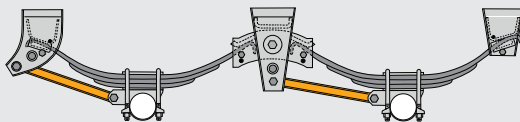


KITS APPLY TO ALL MECHANICAL SUSPENSION MODELS

FIXED TORQUE ARM KIT

SPK0005

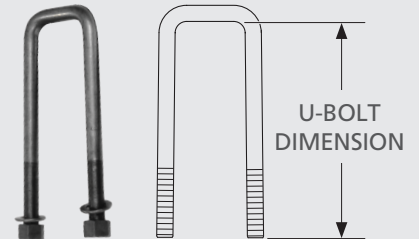
- 1 KIT PER AXLE
- 2 KITS PER TANDEM



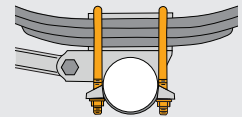
TANDEM AXLE SUSPENSION

U-BOLT KIT

- SPK0009 9.38"
- SPK0010 9.88"
- SPK0011 10.38"
- SPK0012 10.88"
- SPK0013 11.38"



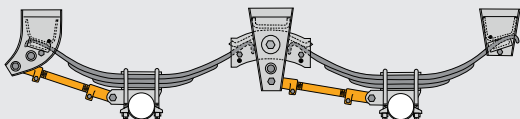
- 2 KITS PER AXLE END
- 4 KITS PER AXLE
- 8 KITS PER TANDEM
- (INCLUDES NUTS AND WASHERS)



ADJUSTABLE TORQUE ARM KIT

SPK0006

- 1 KIT PER AXLE
- (2 KITS PER TANDEM)

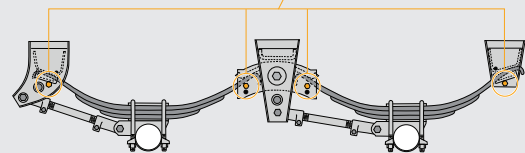


TANDEM AXLE SUSPENSION

RETAINING BOLT KIT

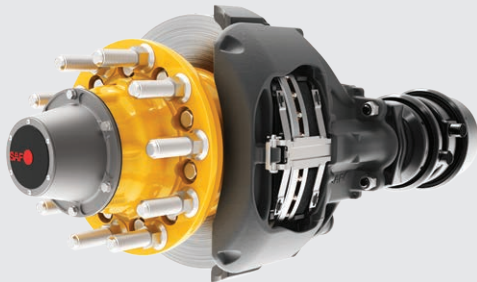
SPK0111

- 4 KITS PER AXLE
- (8 KITS PER TANDEM)



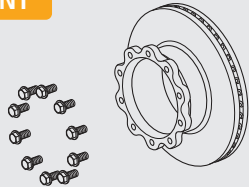
TANDEM AXLE SUSPENSION

SAF P89 PARALLEL SPINDLE KITS



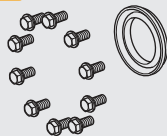
ROTOR REPLACEMENT

51830049



ROTOR ATTACHMENT

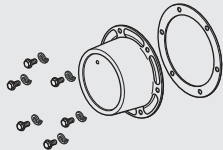
51830051



HUB CAP REPAIR

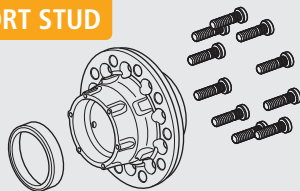
2074200000200
STD Grease

2074200000210
PSI



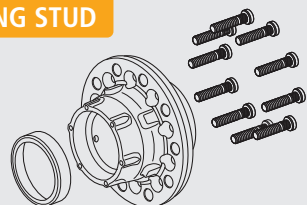
HUB ASSEMBLY SHORT STUD

2073300000710



HUB ASSEMBLY LONG STUD

2073300000720



DUST SHIELD

1022300000040

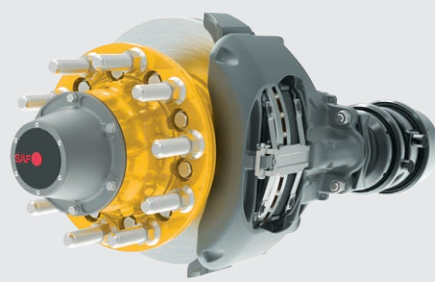


ABS SENSOR

1022300000020

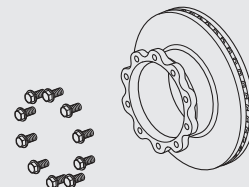


SAF P89 TAPER SPINDLE KITS



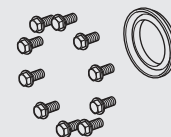
ROTOR REPLACEMENT

51830049



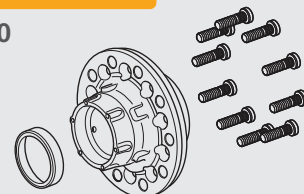
ROTOR ATTACHMENT

51830050



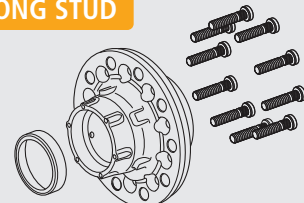
HUB ASSEMBLY SHORT STUD

2073300000730



HUB ASSEMBLY LONG STUD

2073300000740



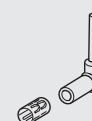
DUST SHIELD

1022300000040



ABS SENSOR

1022300000020

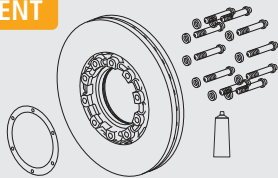


SAF P89 PLUS KITS FEATURES SEALED BEARINGS



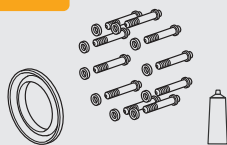
ROTOR REPLACEMENT

51830036



ROTOR ATTACHMENT

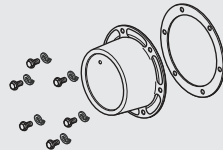
51830055



HUB CAP REPAIR

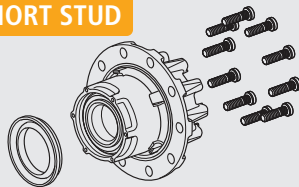
2074200000200
STD Grease

2074200000210
PSI



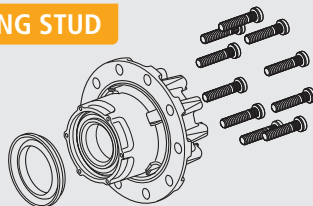
HUB ASSEMBLY SHORT STUD

2073190000120



HUB ASSEMBLY LONG STUD

2073190000130



DUST SHIELD

1022300000040

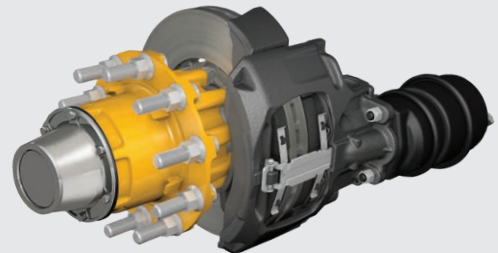


ABS SENSOR

1022300000020

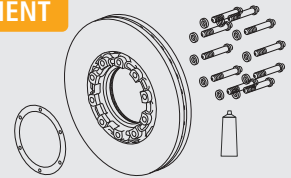


SAF P89 INTEGRAL® KITS EQUIPPED WITH STANDARD BEARINGS



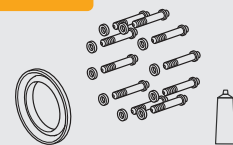
ROTOR REPLACEMENT

51830036



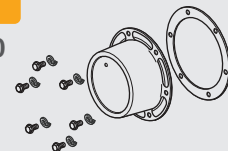
ROTOR ATTACHMENT

51830038



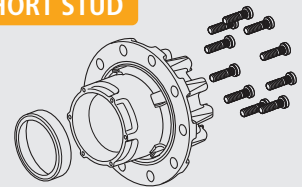
HUB CAP REPAIR

2074200000210



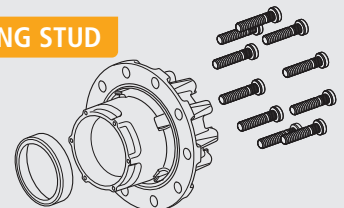
HUB ASSEMBLY SHORT STUD

2073190000090



HUB ASSEMBLY LONG STUD

2073190000100



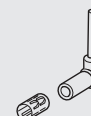
DUST SHIELD

1022300000040



ABS SENSOR

1022300000020

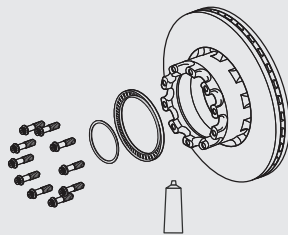


SAF ● C88 INTEGRAL® AIR DISC BRAKES KITS



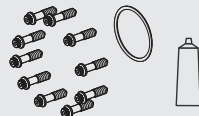
ROTOR REPLACEMENT

51830037



ROTOR ATTACHMENT

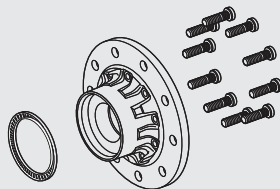
03434366300Z



GEN I HUB ASSEMBLY SHORT STUD

2073190000140
(GEN I)

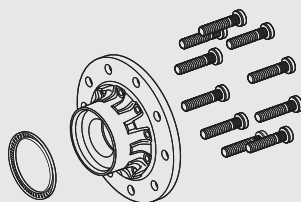
2073190000160
(GEN II)



GEN I HUB ASSEMBLY LONG STUD KIT

2073190000150
(GEN I)

2073190000170
(GEN II)



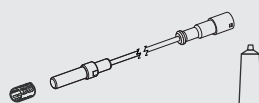
DUST SHIELD KIT

1022300000040



WABCO ABS KIT

03029024200

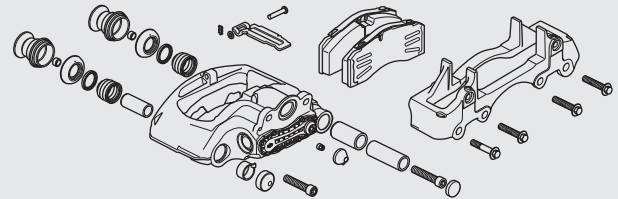


SAF ● SK7 CALIPER KITS

FOR C88 AND P89 INTEGRAL AIR DISC BRAKES

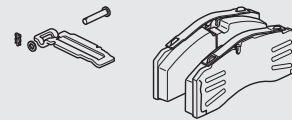
LEFT CALIPER: 51830039

RIGHT CALIPER: 51830040



PAD KIT (L/H) CU- FREE

03057008503



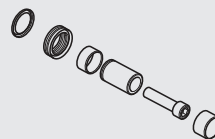
DIAPHRAGM REBUILD KIT

03434381400



PIN REBUILD KIT

03434381500



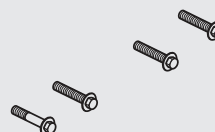
SHEAR ADAPTER KIT

03434381600



MOUNTING BOLTS KIT

03434366000

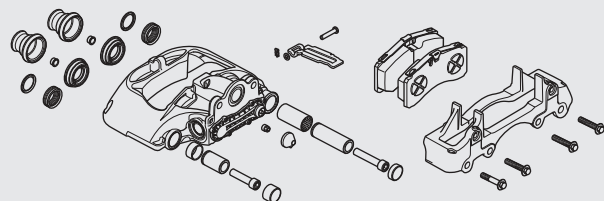


Green Teal
Serial Tag
(SK7 DOES NOT
include SAF
embossed stamp)

SAF ● ST7 CALIPER KITS

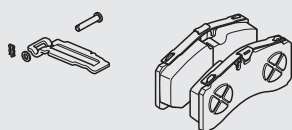
FOR P89 AND P89 PLUS AIR DISC BRAKES

LEFT CALIPER: 51830052
RIGHT CALIPER: 51830053



PAD KIT (L/H) CU- FREE

03057000603



Blue Serial Tag

DIAPHRAGM REBUILD KIT

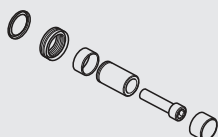
03434382300



SAF Embossed Stamp

PIN REBUILD KIT

03434381500



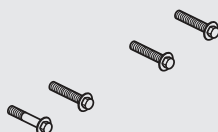
SHEAR ADAPTER KIT

03434381600



MOUNTING BOLTS KIT

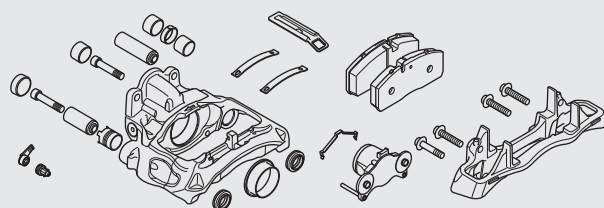
03434366000



SAF ● SBS2220H20 CALIPER KITS

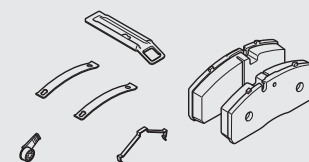
FOR P89 AND P89 PLUS AIR DISC BRAKES

LEFT CALIPER: 51830062
RIGHT CALIPER: 51830063



PAD KIT (L/H) CU- FREE

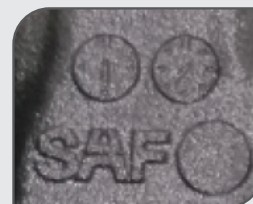
03057009703



Steel Serial Tag

THRUST PIECES KIT

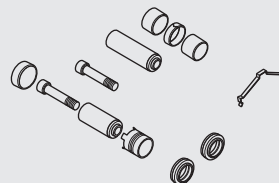
03434386300



SAF De-Bossed Stamp

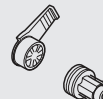
GUIDE SEAL KIT

03434386100



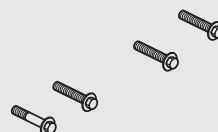
RESET SHAFT KIT

03434386200

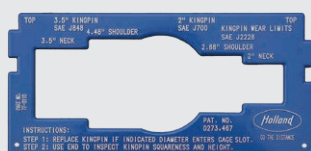
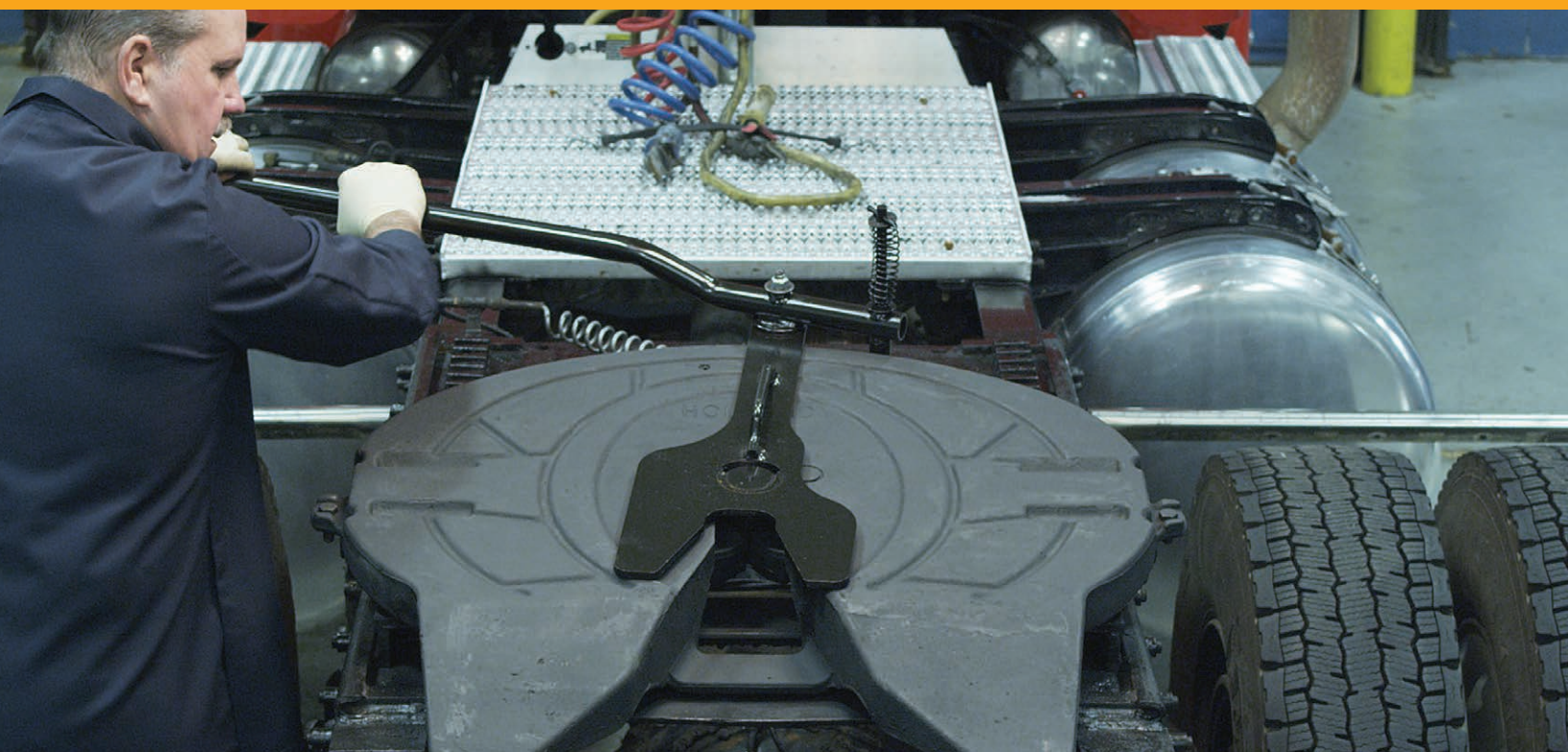


MOUNTING BOLTS KIT

03434366000



Popular Service Tools

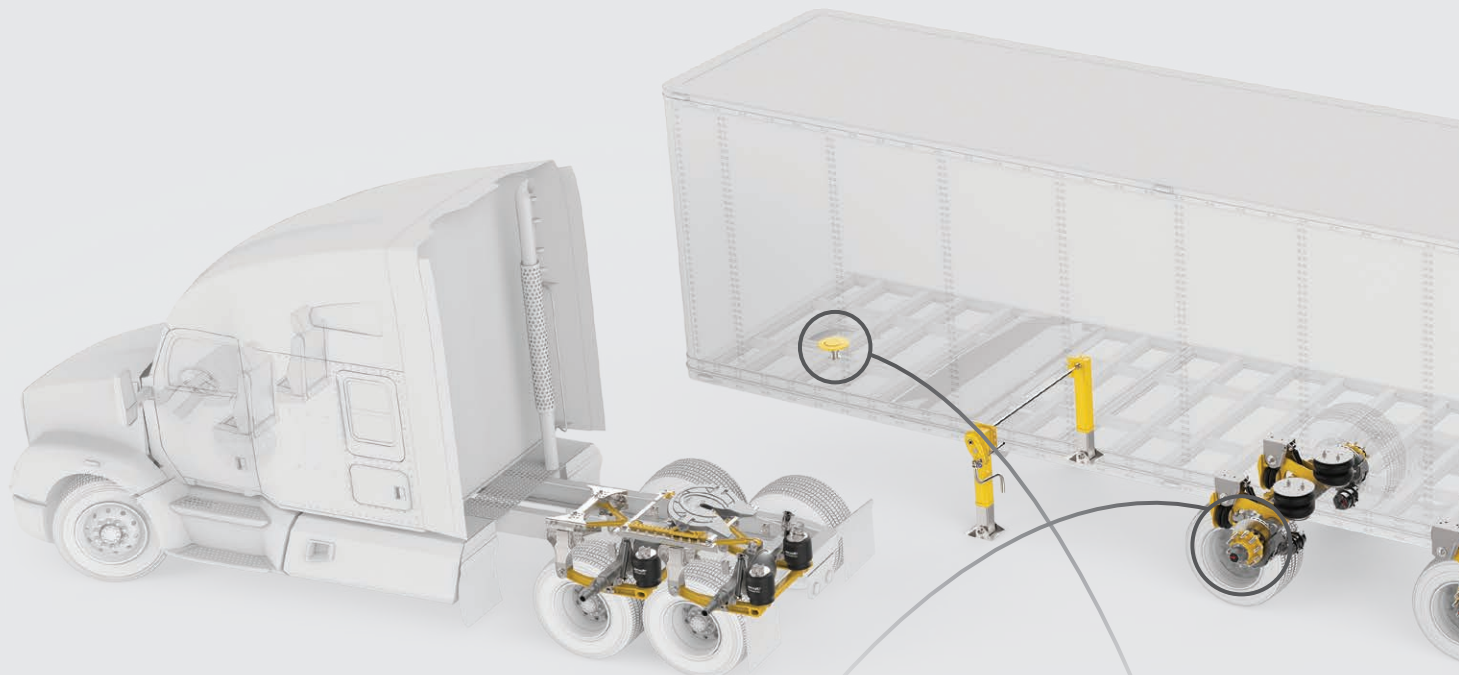


SERVICE TOOLS (See next page for details)

PART NUMBER	DESCRIPTION
FIFTH WHEELS	
TF-04229-1	Rebuild Stand
TF-TLN-5001	Lock Adjustment Tool - 2"
TF-TLN-2500	Slider Spring Compressor
TF-0237	2" Plug
KINGPINS	
TF-0110	Kingpin Wear Gauge
COUPLING PRODUCTS	
TF-10520	Pintle Hook Wear Gauge – PH-550 Series
TF-10612	Pintle Hook Wear Gauge – PH-300, PH-300-R, PH-400-H
TF-11887	Drawbar Eye Wear Gauge Set
TF-10960	Pintle Hook Gap & Wear Gauge – PH-10RP with Frame Numbers XD-11047 and XE-10635, PH-30RP, PH-30SA, PH-30SB
TF-03147-10	Coupler Plunger Adjustment Tool – PH-210, PH-310, PH-410 Series
TF-10521	Pintle Hook Wear Gauge – PH-760 & 775 Series
TF-10522	Pintle Hook Wear Gauge – PH-T-60-AOL-8, PH-T-60-AOS-L-8, PH-30, PH-35 Series
TF-10523	Pintle Hook Wear Gauge – PH-T-90-A, PH-T-126-A
TF-03147	Coupler Plunger Adjustment Tool – PH-200, PH-300, PH-400, PH-550 Series
DISC AND DRUM BRAKES	
03434332802	Universal Disc Brake Tool Kit
03434332700Z	Brake Adjustment Ring w/Spanner Wrench & Adapter 8/10mm – C88 & P89 Models
04434382800Z	85mm Spindle Nut Socket – C88 Models
04434386200Z	15mm Hub Unit Socket w/ 1/2" Drive – C88 & P89 Models
04434385900Z	24mm Caliper Bolt Socket w/ 3/4" Drive – C88 & P89 Models
01434104100Z	Hub Cap Removal Lever – C88 Model
04434106800Z	Hub Mounting Tool 88mm – C88 Model
48100745	Disc Brake Pad Measuring Tool
SUSPENSIONS	
48100538	Bushing Bearing Service Tool – LSZ
50544012	Bushing Service Tool – ADZ, AD, ART, ADL, RL, RLU, NS, and NL Models
50544015	Bushing Service Tool – CB & CBX Models
XL-AS20060ST-en-US	Trailer Suspension Ride Height Gauge

SERVICE AND CHECKING TOOLS FOR SAF, HOLLAND AND NEWAY PRODUCTS

These service support tools bring added convenience to a fleet's maintenance team when they maintain and inspect SAF and NEWAY air suspensions, SAF air disc brake axles, HOLLAND fifth wheels, kingpins, pintle hooks and drawbars.



SUSPENSION SERVICE TOOLS

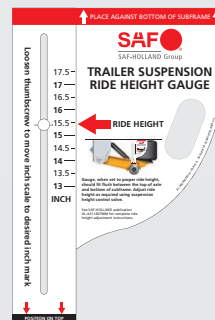


KINGPIN WEAR GAUGE



50544012
Bushings Service Tool For: ADZ,
AD, ART, and ADL Series
RL, RLU, NS and NL Series

50544015
Bushings Service Tool
For: CBX Series
CB and CBY Series



XL-AS20060ST-en-US
Trailer Suspension
Ride Height Gauge
For: CBX Series
(5.75" Axles Only)



TF-0110
Kingpin Wear Gauge
For: 2" and 3.5" Diameter





FIFTH WHEEL SERVICE TOOLS



TF-04229-1
Rebuild Stand



TF-0237
2" Plug



TF-TLN-5001
for all 2" FW King PM Locks except
FWS1, FWS2 and Simplex Models.



TF-TLN-2500
Slider Spring
Compressor - Manual
or Air Release



PINTLE HOOK AND DRAWBAR GAUGE



TF-11887
Drawbar Eye Wear
Gauge Set



TF-10520
Pintle Hook For
PH-550 Series



TF-10612
Pintle Hook Gauge
For PH-200/210/300/
310/400/400-H/410/411

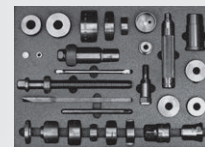
- TF-10960** – Pintle Hook Gap & Wear Gauge
- TF-03147-10** – Plunger Adjustment Tool
- TF-10521** – Pintle Hook Wear Gauge – PH-760 & 775 Series
- TF-10522** – Pintle Hook Gap & Wear Gauge – PH-T-60-AOL-8, PH-T-60-AOS-L-8, PH-30 & PH-35 Series
- TF-10523** – Pintle Hook Gap & Wear Gauge – PH-T-90-A & PH-T-126-A
- TF-03147** – Plunger Adjustment Tool – PH-200, PH-300, PH-400 & PH-550 Series



AIR DISC BRAKE TOOLS



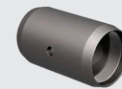
03434332800Z
Universal Disc Brake Tool Kit



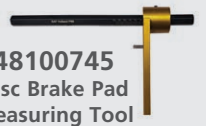
03434333500
SBS2220H20 Disc
Brake Tool KIT



04434382800Z
85mm Spindle Nut
Socket for C88



04434382800Z
88mm Hub Mounting
Tool for C88



48100745
Disc Brake Pad
Measuring Tool



04434385900Z
24mm Caliper Bolt
with 3/4" drive
for C88 & P89



04434386200Z
15mm Hub Unit Socket
with 1/2" Drive
for C88 & P89



01434104100Z
Hubcap Removal Lever

NOTE: If the SAF-HOLLAND service tool you are looking for is not mentioned in this catalog, please contact our customer service representatives for assistance – **800.876.3929**.

Engineering Your Road to Success

The SAF-HOLLAND® Group is one of the leading international manufacturers of suspension-related assemblies and components for trailers, trucks and buses. Our innovative products increase the efficiency, safety and environmental friendliness of commercial vehicles, contribute to the success of our customers. With around 3,000 employees worldwide, we are at the forefront of shaping the future of the transportation industry.



Trailer Axles and
Suspension Systems



Coupling and Lifting
Technologies



Brake Solutions &
Air Valve Technologies



Suspensions and Components
for Commercial Vehicles



Suspensions for
Trucks and Buses



Trailer
Telematics



Coupling and Lifting
Technologies



Trailer Axles and
Suspensions Systems

safholland.com

SAF-HOLLAND, Inc
1950 Industrial Blvd. Muskegon, MI
Tel 800.876.3929